

Appropriate Photo-Documentation for Rehabilitation of Historic Properties using Historic Preservation Federal and State Tax Incentives

Photo-documentation of a historic property is one of the most important aspects of applying to the Historic Preservation Tax Incentive Programs. It consists of a series of photographs, their numbering/labeling, and a photo-key drawing. These photographs are one of two primary resources used to evaluate a project to determine if it qualifies for the tax incentives, the other being the rehabilitation work descriptions. Pre-rehabilitation photographs are used to put the project within the context of the entire historic property and for comparison with the finished work. To achieve this, sufficient photo-documentation is necessary. The entirety of the historic property needs to be photo-documented, which also includes areas or spaces of the property that are not part of the proposed rehab work so that unchanged areas are confirmed as such at project completion.

Without adequate photographs documenting the pre-rehabilitation existing conditions, a project may lack enough essential information to even meet minimal requirements for the review process. Any application with unclear, deficient, or not enough photographs of pre-rehabilitation conditions may be returned because of insufficient documentation to evaluate the project adequately. Finished project photo-documentation, though equally important, is typically less a problem because the opportunity to provide supplemental photographs, if necessary, is still available.

Guidance on correct procedures to adequately photo-document rehabilitation projects can also be found in the instructions for the Tax Incentives applications.

POINTS ON PHOTOGRAPHY:

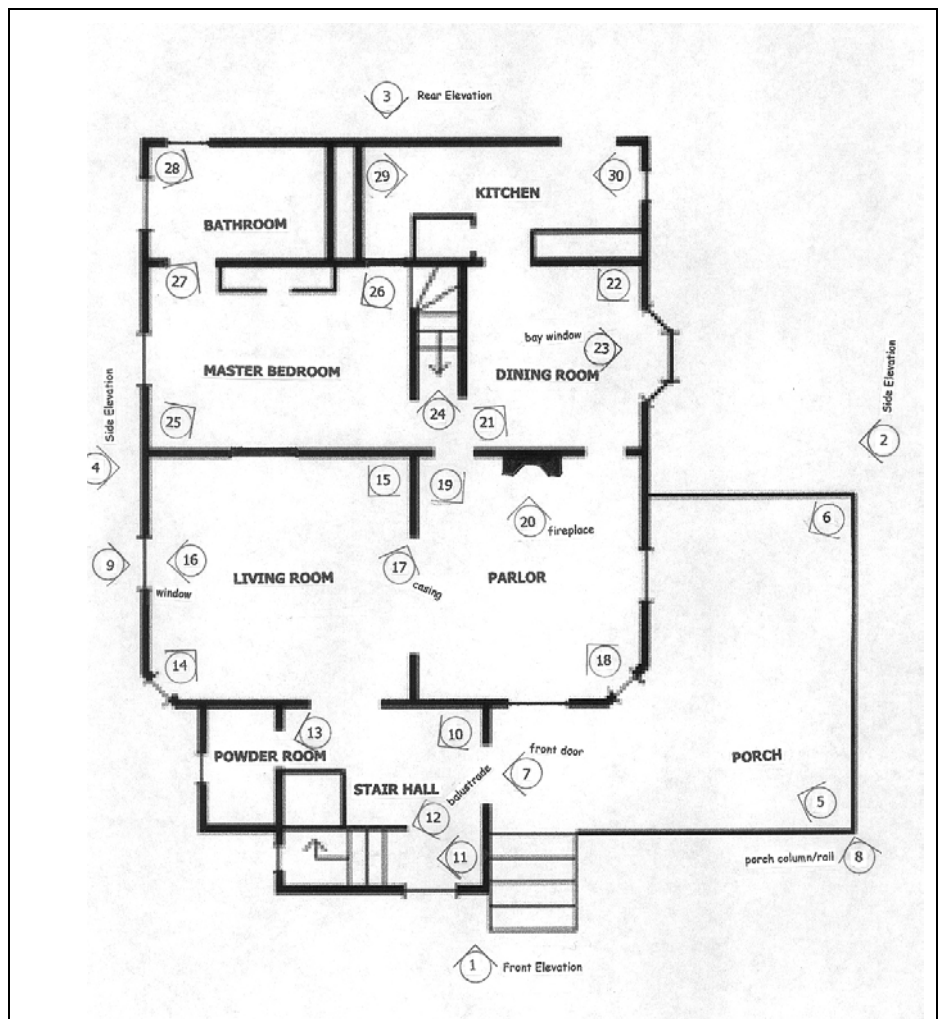
1. **35 mm color prints sized at 4 X 6 inches are the preferred format**, although other photographic formats and sizes can be acceptable, including digital and 35 mm black & white. **Avoid** sizes smaller than 3 X 5 inches. **Avoid** Polaroid photographs; they are not acceptable for Federal applications and rarely provide enough level of detail and clarity to be acceptable for State Applications. However, **ANY** photographs submitted with an application **MUST** provide obvious and comprehensible information. They must clearly show the areas or features being documented. Photographs that are out-of-focus, blurry, fuzzy, too dark, over-exposed (too light), photocopied, or low-resolution digital are unacceptable as adequate documentation. Photographs should be examined prior to submission to determine that they adequately provide the view that is intended. **Digital photos** must have an image resolution of at least **300 dpi** (dots-per-inch). All photographic formats need to be submitted as **individual, loose prints** that are printed on glossy, matte, or photo stock paper. Please **do not** submit photos printed on plain paper. Please **do not** submit photos printed together on 8 ½ X 11 (or other sized) sheets, or mounted, sleeved, or otherwise bound.
2. Photographs must be taken in sufficient quantity and clarity to adequately document the pre-rehabilitation existing conditions and subsequently, the finished project. Enough photographs of all spaces, building elevations, and specific features must be provided as the visual description of the project's scope-of-work. **At a minimum**, typically, this would include photos of all exposed building elevations, 2 photos per room, which should be oriented corner-to-corner from opposite corners, and additional photos of features and finishes being impacted by the rehabilitation work. Features and finishes may include, but are not limited to: masonry, plaster, windows, doors, trim and other millwork, stairs, ceilings, and fireplaces. If areas are too large or at a difficult angle, multiple photos need to be taken to ensure full and clear coverage of the entire area.
3. Photo-documentation of large projects with multiple, near identical spaces may not need photos of every room. In such cases, interior photographs of significant areas along with representative photos of the typical spaces may be acceptable.
4. Photographs must be labeled and keyed to a floor plan of the rehabilitation project. The position of the photographer, the direction toward which the picture was taken, and the photo number must be labeled on the drawing (a number within a circle with a directional arrow). The photographs themselves must be labeled with corresponding identification/information on their back.

Any application with insufficient, inadequate, or otherwise unacceptable photo-documentation will be put on hold, concurrent with a Request For Information (RFI) to the applicant, until the necessary photography is furnished. Should the information not be forthcoming in a reasonable period of time, the application will be returned without review.

TIPS ON PHOTOGRAPHING PROJECTS & KEYING PHOTOGRAPHS TO FLOOR PLANS

- 1) Exterior photographs must document all facades of the building. Interior photographs must record architectural features and finishes, such as: windows, doors, fireplace mantels and surrounds, floors, walls, ceilings, stairs, mouldings, etc., as well as provide an overview of rooms throughout the building. Pay special attention to areas, which will be impacted by the proposed rehabilitation work.
- 2) Photo-key floor plans should be 8 ½ X 11 copies of the construction plans. If such is not available, floor plans can be hand drawn on blank or graph paper, but need to note all windows, doors, wall openings, fireplaces, stairs, etc.
- 3) All interior and exterior photographs should be numbered and identified with property address.
- 4) A circle with the number of each photograph should denote on the floor plan the location of the photographer. The arrow identifies the direction of the photograph.
- 5) Please send individual 4 X 6 inch 35mm color photographs; HPD and NPS cannot accept color copied, scanned, or digital images or photos that have been mounted on paper or in plastic sleeves.
- 6) Keep a copy of the before-rehabilitation photo-key for reference when photo-documenting the completed project. For comparison, views of the completed work should be of and from the same locations.

EXAMPLE OF A KEYED FLOOR PLAN



Required Photo Label Information

Project Street Address

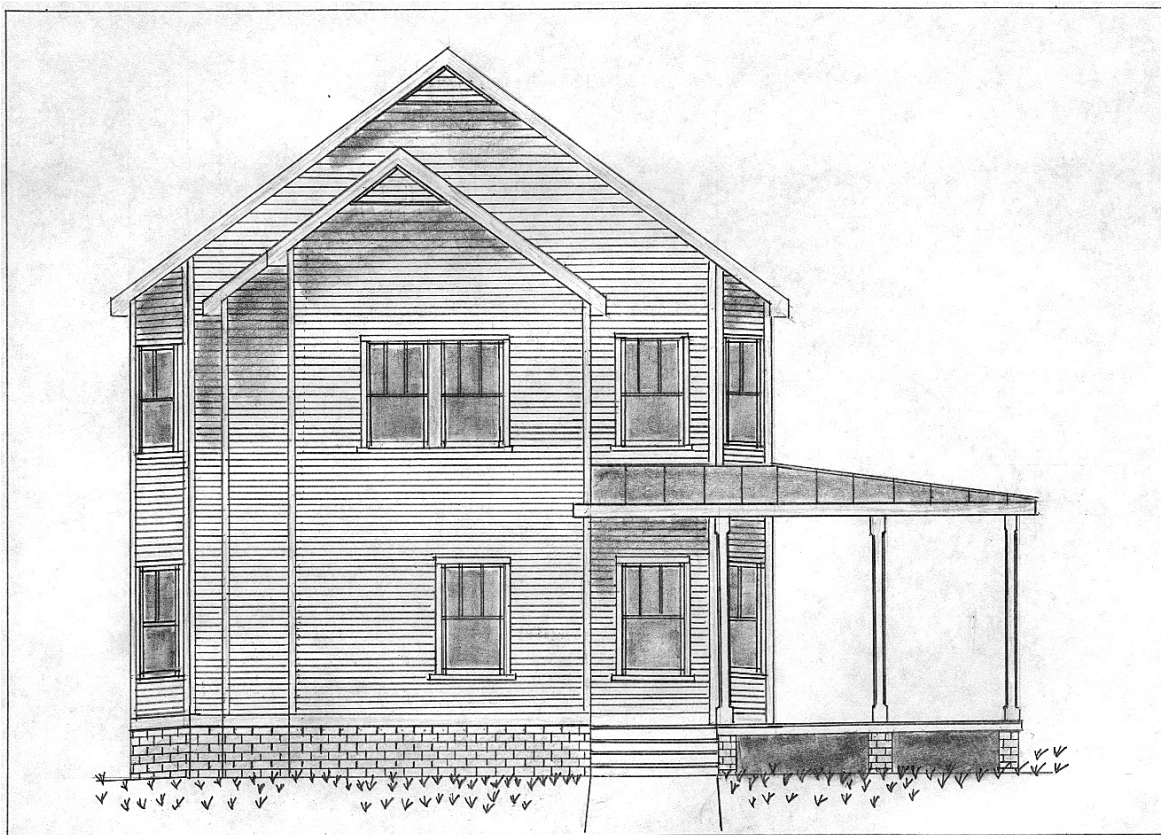
City, County, Georgia

Date _____

Photo # _____

Drawing Reference or Detail Description (if applicable)

Sample Photo and Label



(Label on Back of Photograph)

123 North Main St.

Middleville, Smith County, Georgia

Date: March 3, 2003

Photo # 1

Front Elevation